

Otmar Binder: Piano Boogie Woogie Tutorial Nr 1 2/2

G^7
8va
 $G^{\circ 7}$
 G^7
 $G^{\circ 7}$
 G^7
 $G^{\circ 7}$
 G^7

C
G

D
C
G
 G^7/B
C
 E^b7/D^b
D

G

C
G

D
C
G
 G^7/B
C
 E^b7/D^b
D
D
C
 D^7/A
G
G

8va

G G⁷

G G⁷ G⁷ G⁷ G⁷ C

G D C G G⁷/B C E^b7/D^b D

G

C G

D C G G⁷/B C E^b7/D^b D D C D⁷/A G G

G⁷ G^{o7} Cm⁶/G G⁷

C G

D C G G⁷/B C E^b7/D^b D

G

C G

D C G G⁷/B C E^b7/D^b | D | D C D⁷/A G G

G⁷ G^{o7} Cm⁶/G G⁷

8va

C G

D C G G⁷/B C Eb⁷/Db D

G

C G

D C G G⁷/B C Eb⁷/Db D D C D⁷/A G G

8 bar intro leading to the tonic

F⁷ F^o Bbm⁷/F 5

F⁷ F^o Bbm⁶/F

F C⁺ F B^b F

F⁷ Bb⁷ F

C B^b F F⁷/A B^b C[#]/B

C C⁺ C B^b C⁷/G F F

8^{va} =

Ab⁷ Ab^{o7}

(8) Ab⁷ Ab^{o7} Ab⁷ Ab^{o7} Db

Ab Eb Db Ab Ab⁷/C Db E⁷/D Eb

Ab

Db Ab

Eb Db Ab Ab⁷/C Db E⁷/D | Eb Eb Db Eb⁷/Bb Ab Ab

Musical notation for the first system. The treble clef contains a triplet of eighth notes followed by a series of chords: C7, C°7, Ab7/C, C°7, Cm7(b5), C7, and C°7. The bass clef contains corresponding chord voicings.

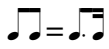
Musical notation for the second system. The treble clef contains chords C7, C°7, C7, F, and C. The bass clef contains corresponding chord voicings.

Musical notation for the third system. The treble clef contains chords G, F, C, C7/E, F, Ab7/Gb, and G. The bass clef contains corresponding chord voicings.

Musical notation for the fourth system. The treble clef contains a C chord. The bass clef contains corresponding chord voicings.

Musical notation for the fifth system. The treble clef contains F and C chords. The bass clef contains corresponding chord voicings.

Musical notation for the sixth system. The treble clef contains chords G, F, C, C7/E, F, Ab7/Gb, G, G, F, G7/D, C, and C. The bass clef contains corresponding chord voicings.



Chord progression: C#7, C#o, C#7, C#o

Chord progression: C#7, C#o, C#7, F#, C#

Chord progression: G#, F#, C# C#7/E# F# A7/G G#

Chord progression: C#, F#, C#

Chord progression: G#, F#, C# C#7/E# F# A7/G G#

Chord progression: G# F# G#7/D# C#

8^{va} D7 D° D D°

D7 D° D7 G D

A G D D7/F# G Bb7/Ab A

D

G D

A G D D7/F# G Bb7/Ab | A A G A7/E D D

Musical notation for the first system, featuring a treble and bass staff. The treble staff contains complex chords and melodic lines, with a '8va' marking above the first measure. The bass staff contains chords and a melodic line. Chord symbols above the treble staff include Eb7, Eb°, Eb7, Eb°, Eb7, Eb°, Eb7, Eb°, and Eb.

Musical notation for the second system, showing a treble and bass staff. Both staves contain rests. Chord symbols 'Ab' and 'Eb' are placed above the first and second measures respectively.

Musical notation for the third system, showing a treble and bass staff. The treble staff contains notes and chord symbols: Bb, Ab, Eb, Eb7/G, Ab, B7/A, Bb. The bass staff contains notes. A 'b' symbol is placed above the final measure.

Musical notation for the fourth system, showing a treble and bass staff. Both staves contain rests. A chord symbol 'Eb' is placed above the first measure.

Musical notation for the fifth system, showing a treble and bass staff. Both staves contain rests. Chord symbols 'Ab' and 'Eb' are placed above the first and second measures respectively.

Musical notation for the sixth system, showing a treble and bass staff. The treble staff contains notes and chord symbols: Bb, Ab, Eb, Eb7/G, Ab, B7/A, Bb. The bass staff contains notes. A 'b' symbol is placed above the final measure. The system concludes with a double bar line and a key signature change to three sharps.

8va-

12 F^7 $F^{\circ 7}$ F^7 $F^{\circ 7}$

F^7 $F^{\circ 7}$ F^7 B^b F

C B^b F F^7/A B^b $C^{\#7}/B$ C

F

B^b F

C B^b F F^7/A B^b $C^{\#7}/B$ C C B^b C^7/G F F

♩ = ♩

F#7 F#o7

3 3 3 6 3 3

8va

F#7 F#7 C#7(add13)

6

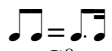
8

F#

B F#

C# B F# F#7/A# B D7/C C#

C# B C#7/G# F# F#



G⁹
15^{ma}

G^{o7}

G⁷

C

G

D

C

G

G⁷/B

C

E^b7/D^b

D

f

G

C

G

D

C

G

G⁷/B

C

E^b7/D^b

D

D

C

D⁷/A

G

G

♩ = ♩

15^{ma} ----- Ab⁷ ----- Ab^{o7}

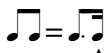
Ab⁷ (15) ----- Ab^{o7} ----- Ab⁷ Ab^{o7} Ab⁷ Db

Ab Eb Db Ab Ab⁷/C Db E⁷/D Eb

Ab

Db Ab

Eb Db Ab Ab⁷/C Db E⁷/D Eb Eb Db Eb⁷/Bb Ab Ab



A⁷ A^o A⁷ A^o

15^{ma}

6

3

A⁷ A^o A⁷ D A

(15)

E D A A⁷/C[#] D F⁷/E^b E

A

D A

E D A A⁷/C[#] D F⁷/E^b E E D E⁷/B A A

Musical notation system 1: Treble and bass clefs. Includes a tempo marking $\text{♩} = \text{♩}$ and a dynamic marking *8^{vb}*. Chords Bb , Gb^9 , and Bb are indicated above the staff. A triplet of eighth notes is marked with a '3'.

Musical notation system 2: Treble and bass clefs. Chords Eb and Bb are indicated above the staff.

(8)-----|

Musical notation system 3: Treble and bass clefs. Chords F , Eb , Bb , Bb^7/D , Eb , $F^{\#7}/E$, and F are indicated above the staff.

Musical notation system 4: Treble and bass clefs. Chord Bb is indicated above the staff.

Musical notation system 5: Treble and bass clefs. Chords Eb and Bb are indicated above the staff.

Musical notation system 6: Treble and bass clefs. Chords F , Eb , Bb , Bb^7/D , Eb , $F^{\#7}/E$, F , F , Eb , F^7/C , Bb , and Bb are indicated above the staff. The system concludes with a key signature change to three sharps.

Chords: B, B⁷, B⁷, B⁷, B⁷, B⁷, B

Chords: E, B

Chords: F[#], E, B, B⁷/D[#], E, G⁷/F, F[#]

Chord: B

Chords: E, B

Chords: F[#], E, B, B⁷/D[#], E, G⁷/F, F[#], F[#], E, F⁷/C[#], B, B